

SALTA

LAND OF OPPORTUNITIES

DRIVING MINING AND ENERGY DEVELOPMENT IN
NORTHERN ARGENTINA



SALTA
GOBIERNO



remsa
ENERGÍA Y MINERÍA SALTEÑA

REMSa S.A.

- A state-majority-owned corporation.
- An efficient link between the Government, the private investment sector, and the community.
- Acts as the entity responsible for tendering and awarding mining properties, ensuring full transparency in the process.
- Strategic partner to the private sector for project development through proprietary mining assets.
- Committed to long-term environmental sustainability.
- Drives renewable and alternative energy projects.
- Promotes and funds key infrastructure projects to support industrial growth (power grids, gas pipelines, roads).
- Contributes to the productive and social development of the province by generating and managing mining and energy projects.
- The primary objective is to attract investments that create quality jobs, foster local development, and drive the growth of local suppliers.

THE DIFFERENCE OF INVESTING IN **SALTA**



- Institutional Framework.
- Geological Potential.
- Productive Ecosystem.
- Social Responsibility.



STRATEGIC GEOGRAPHICAL LOCATION



Bioceanic Corridor



Transport and Logistics Network

RELIABILITY OF THE LEGAL FRAMEWORK



- **Mining Court**
- **Long-term certainty**
- **Fiscal stability**
- **RIGI (Large Investment Incentive Regime)**

COMPANIES INVESTING IN SALTA



Compañía de Fortuna Mining Corp.



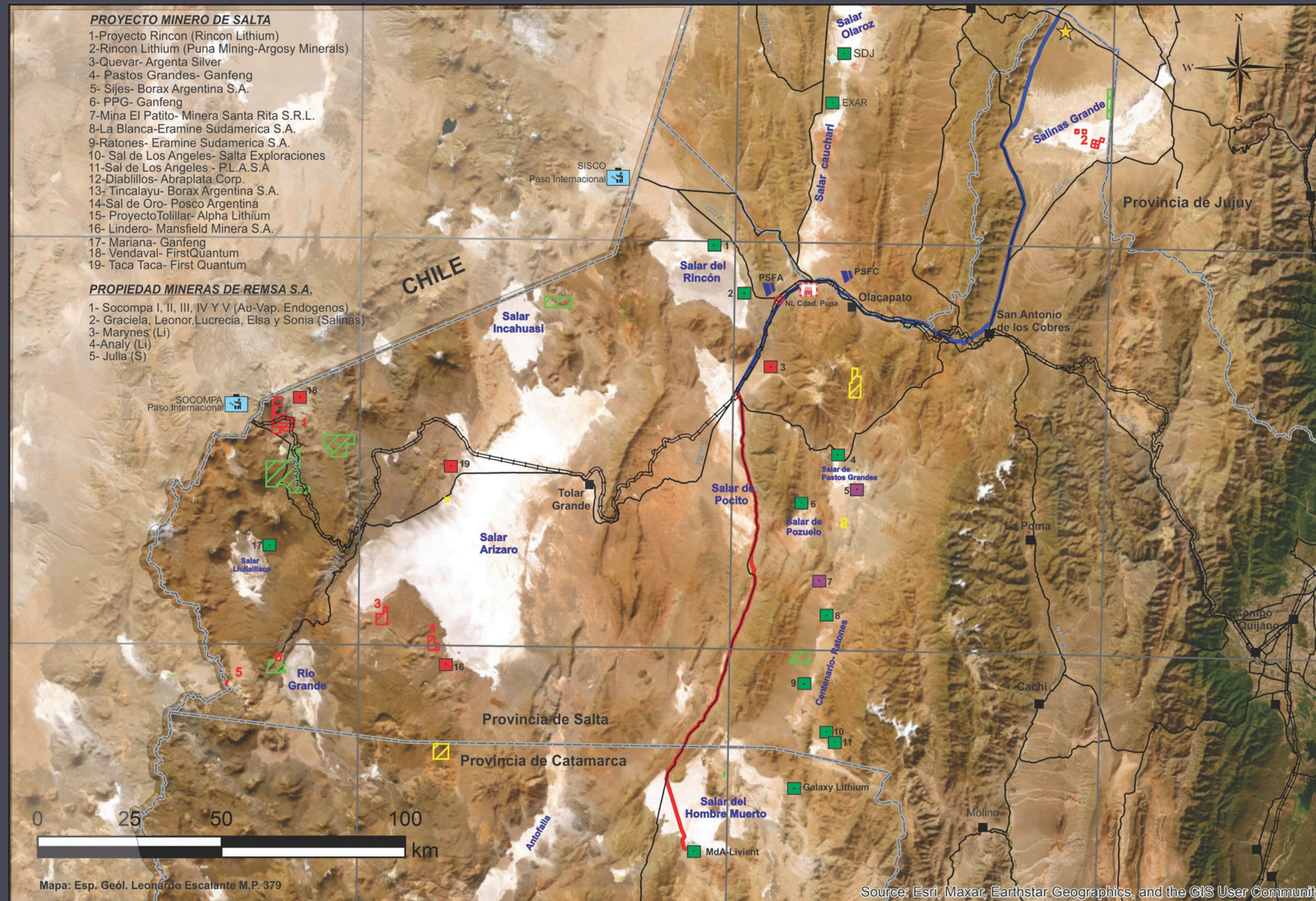
THE MINING SECTOR IN SALTA

Lithium
(Li)

Copper
(Cu)

Gold (Au)
Silver (Ag)

Rare Earth
Elements
(REE)



- PROYECTO MINERO DE SALTA**
- 1-Proyecto Rincon (Rincon Lithium)
 - 2-Rincon Lithium (Puna Mining-Argosy Minerals)
 - 3-Quevar- Argenta Silver
 - 4- Pastos Grandes- Ganfeng
 - 5- Sijes- Borax Argentina S.A.
 - 6- PPG- Ganfeng
 - 7-Miña El Patito- Minera Santa Rita S.R.L.
 - 8-La Blanca-Eramine Sudamerica S.A.
 - 9-Ratonos- Eramine Sudamerica S.A.
 - 10- Sal de Los Angeles- Salta Exploraciones
 - 11-Sal de Los Angeles - P.L.A.S.A
 - 12-Diablillos- Abraplata Corp.
 - 13- Tincalayu- Borax Argentina S.A.
 - 14-Sal de Oro- Posco Argentina
 - 15- ProyectoTolillar- Alpha Lithium
 - 16- Lindero- Mansfield Minera S.A.
 - 17- Mariana- Ganfeng
 - 18- Vendaval- FirstQuantum
 - 19- Taca Taca- First Quantum
- PROPIEDAD MINERAS DE REMSA S.A.**
- 1- Socompa I, II, III, IV Y V (Au-Vap. Endogenos)
 - 2- Graciela, Leonor, Lucrecia, Elsa y Sonia (Salinas)
 - 3- Marynes (Li)
 - 4-Analy (Li)
 - 5- Julia (S)

Mapa: Esp. Geól. Leonardo Escalante M.P. 379

Source: Esri, Maxar, Earthstar Geographics, and the GIS User Community



Overview of active mining projects, existing and planned natural gas pipeline routes, and REMSA S.A. mining properties and Areas of Interest (AOI) in Salta, Argentina

- Propiedad Minera de REMSA
- Área de Investigación Geologica
- Área retenida por Art. 29
- Gasoducto PUNA
- Gasoducto FENIX
- Planta compresora
- PROYECTO DE LITIO
- PROYECTO DE ORO - PLATA - COBRE
- PROYECTO DE BORATOS
- PSF Cauchari / PSF Altiplano
- Nodo Logístico "Ciudad Puna"



MINING EXPORT PERFORMANCE



Salta is the **4th largest exporting** province in Argentina



GOLD

Represents **64.3%** of Salta's total exports



LITHIUM

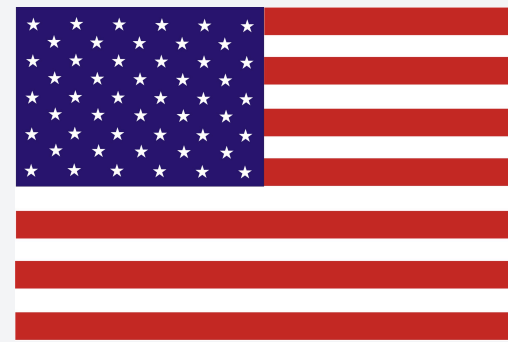
20.2% Export Share



BORATES

14.2% Export Share

TOP EXPORT DESTINATIONS



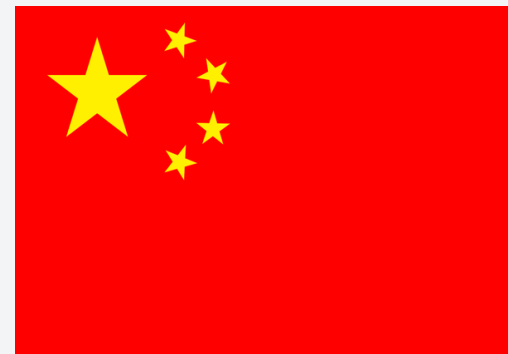
USA

62,1%



BRAZIL

11,9%



CHINA

7,2%



GERMANY

7,8%



SOUTH AFRICA

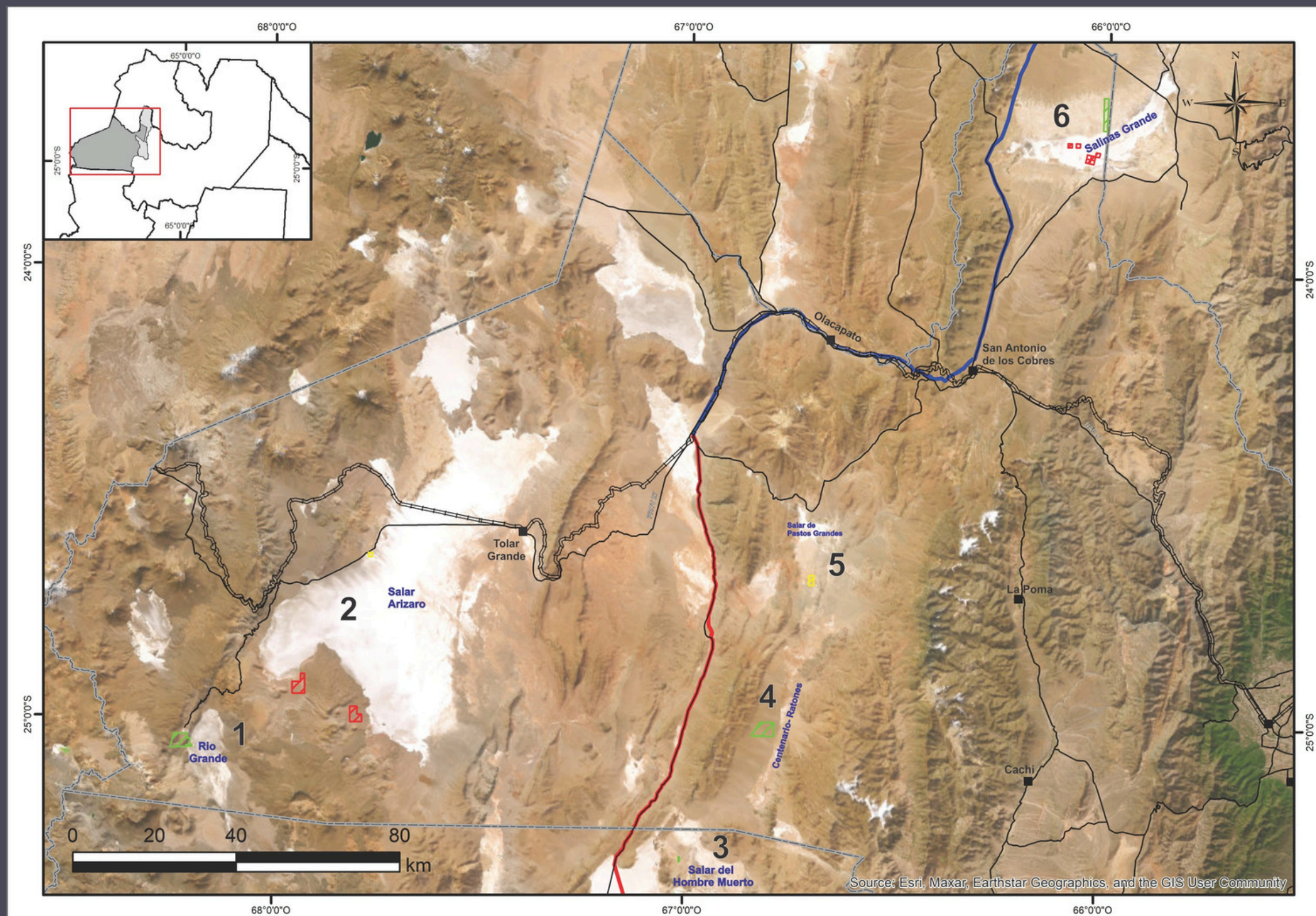
2,8%

MINERAL AND ENERGY ASSETS

AVAILABLE PROSPECTIVE **AREAS**

MINERAL AND ENERGY ASSETS

AVAILABLE PROSPECTIVE AREAS



- 1 Río Grande
- 2 Salar de Arizaro
- 3 Salar del Hombre Muerto
- 4 Centenario Ratonos
- 5 Salar de Pastos Grandes
- 6 Salinas Grandes



TENDERS AND ART. 29

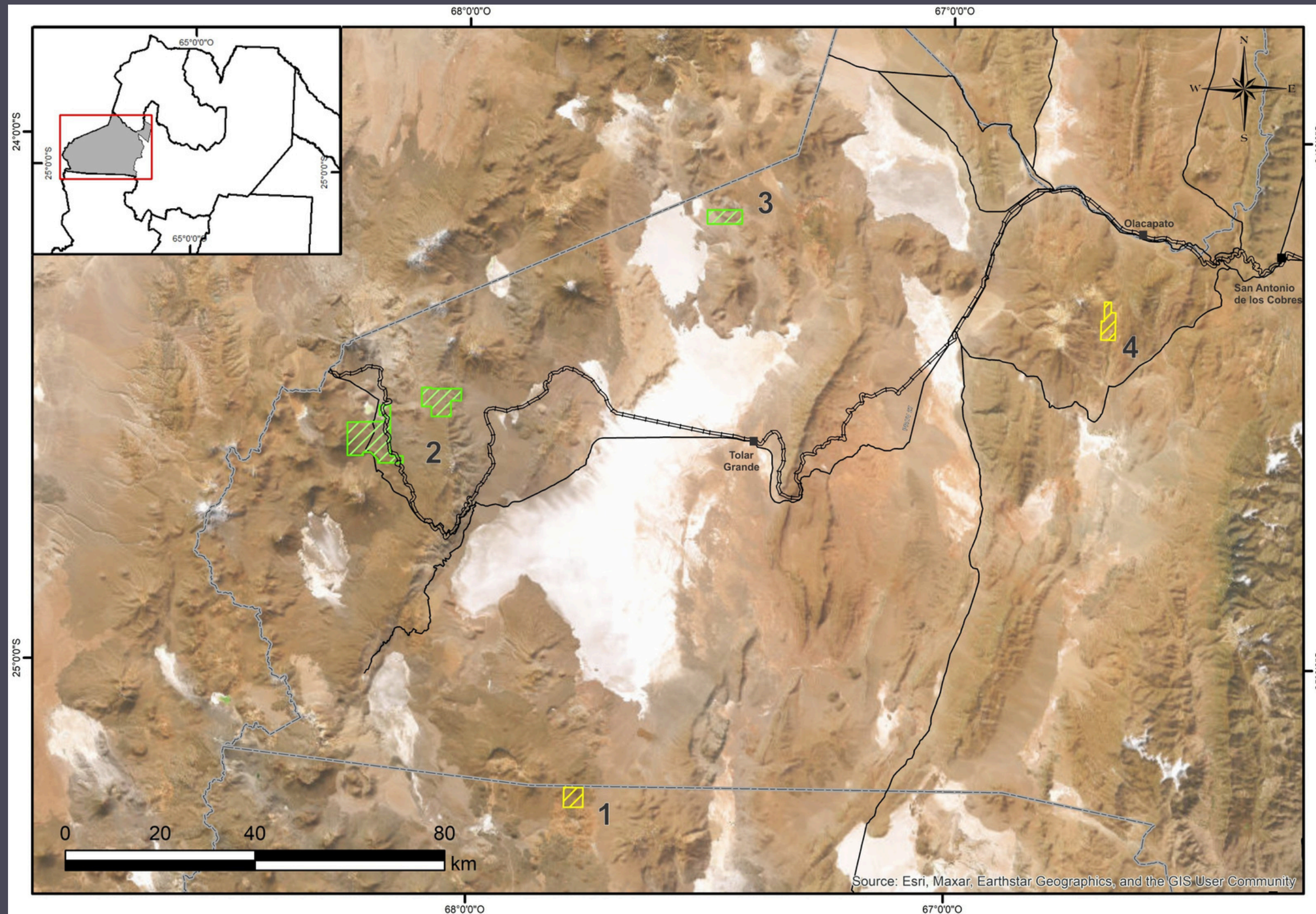
Name	Mineral	Department	Borough	Location	Tenement
Río Grande I y Demasía	Li	Los Andes	Tolar Grande	Salar de Río Grande	1,362.27 ha
Grandes VI	Li	La Poma	La Poma	Salinas Grandes	774.72 ha
Cateo	Li	Los Andes	San Antonio de los Cobres	Salar del Hombre Muerto	28.02 ha
El Nihuil 1	Li	Los Andes	San Antonio de los Cobres	Salar de Centenario	1,499.18 ha
Luchi 01	Li	Los Andes	Tolar Grande	Salar de Arizaro	100 ha
Sofía 5	Li	Los Andes	Santa Rosa de los Pastos Grandes	Sijes	288 ha

REMSA S.A. AVAILABLE MINING PROPERTIES

Location	Mineral	Tenement
Salinas Grandes	Li	700 ha
Salar Arizaro	Li	1,091.32 ha

MINERAL AND ENERGY ASSETS

AVAILABLE PROSPECTIVE AREAS



- 1 Archibarca
- 2 Socompa-Cerro Arizar
- 3 Incahuasi
- 4 El Quevar

79
Au
Gold
196.9665

47
Ag
Silver
107.8682

29
Cu
Copper
63.546



Overview of active mining projects, existing and planned natural gas pipeline routes, and REMSA S.A. mining properties and Areas of Interest (AOI) in Salta, Argentina

Área de Investigación Geológica
Área retenida por Art. 29



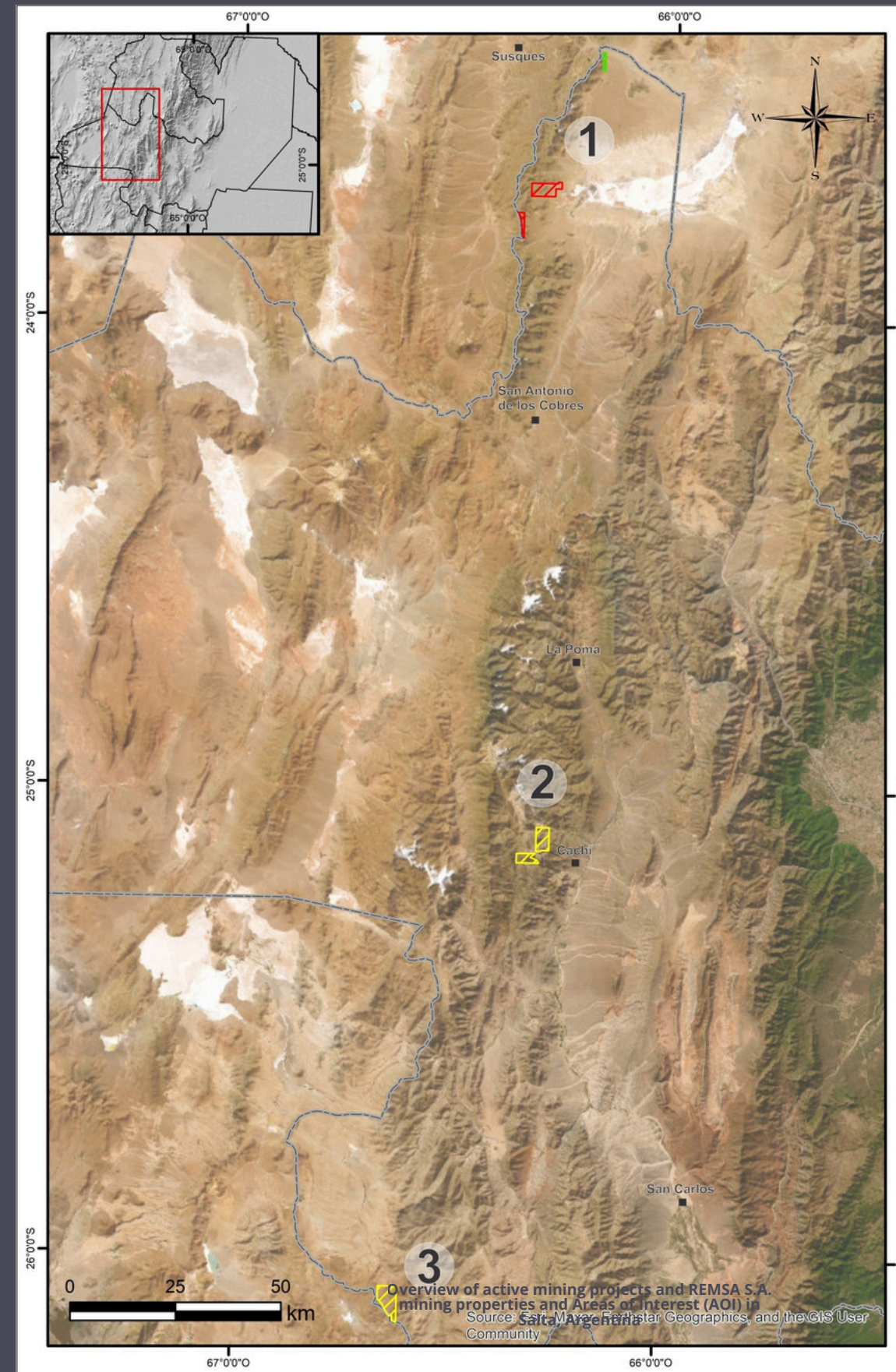
TENDERS, ART. 29 & REMSA S.A. MINING PROPERTIES

Name	Mineral	Department	Borough	Location	Tenement
Papadópulos XL V	Ag, Au, Cu	Los Andes	Tolar Grande	Incahuasi	2,156.79 ha
Cateo	Cu, Au	Los Andes	Tolar Grande	Cerro Arizar	11,472.03 ha
Alheli X	Cu, Au	Los Andes	Tolar Grande	Archibarca	1,679.72 ha
Pastos Grandes I	Ag, Cu, Au	Los Andes	San Antonio de los Cobres	Aguas Calientes	1,929 ha
Sepultura	Au (Alluvial)	Santa Victoria	Santa Victoria Oeste	Pucará	15,15 ha

MINERAL AND ENERGY ASSETS

AVAILABLE PROSPECTIVE AREAS

Rare Earth Elements (REE)



- 1 Sierra Rangel
- 2 Cachi - Palermo
- 3 San Carlos

TENDERS AND ART. 29

Name	Mineral	Department	Borough	Location	Tenement
Curamayo III	ETR	La Poma	La Poma	La Poma - Rangel	250.04 ha
Olivia VII	ETR	Cachi	La Poma	Trancas	1,691.36 ha
Catalina XI	ETR	Cachi	Cachi	Cerro Bola	1,331.47 ha
Luingo II	ETR	San Carlos	Angastaco	Angastaco	2,683.73 ha

MINERAL AND ENERGY ASSETS

GREEN ENERGY

Geothermal Potential:
La Puna, in Salta, has vast geothermal potential, standing out as one of Argentina's most promising renewable energy hubs.



REMSA S.A. AVAILABLE MINING PROPERTIES

Name	Mineral	Location	Tenement
SOCOMPA I	Geothermal Fluids	Socompa	629.99 ha
SOCOMPA II	Geothermal Fluids	Socompa	630 ha
SOCOMPA III	Geothermal Fluids	Socompa	629.99 ha
SOCOMPA IV	Geothermal Fluids	Socompa	630 ha
SOCOMPA V	Geothermal Fluids	Socompa	682.11 ha

ENERGY ASSETS

GREEN ENERGY

- **Altiplano 200 Solar Power Plant (Olacapato):** In partnership with Neoen, the Plant supplies 40% of Salta's total energy demand.
- **Solar Power Potential:** The Salta Puna has solar irradiation levels similar to the world's leading solar hubs, positioning it as a highly strategic region for large-scale renewable energy development.
- **Strategic Long-Term Plan: REMSA S.A.** drives a comprehensive strategy that integrates energy infrastructure, sustainable natural resource management, and the creation of high-value investment opportunities.



ENERGY INFRASTRUCTURE PROJECTS

ENERGY INFRASTRUCTURE PROJECTS

NATURAL GAS PIPELINES

- Sub-distributes natural gas to the **mining industry**
- Manages the **Puna-Fénix and Anta** pipelines
- Operates over **570 km** pipeline network
- Installation of **residential gas networks**



LOGISTICS INFRASTRUCTURE PROJECTS

ROAD INFRASTRUCTURE

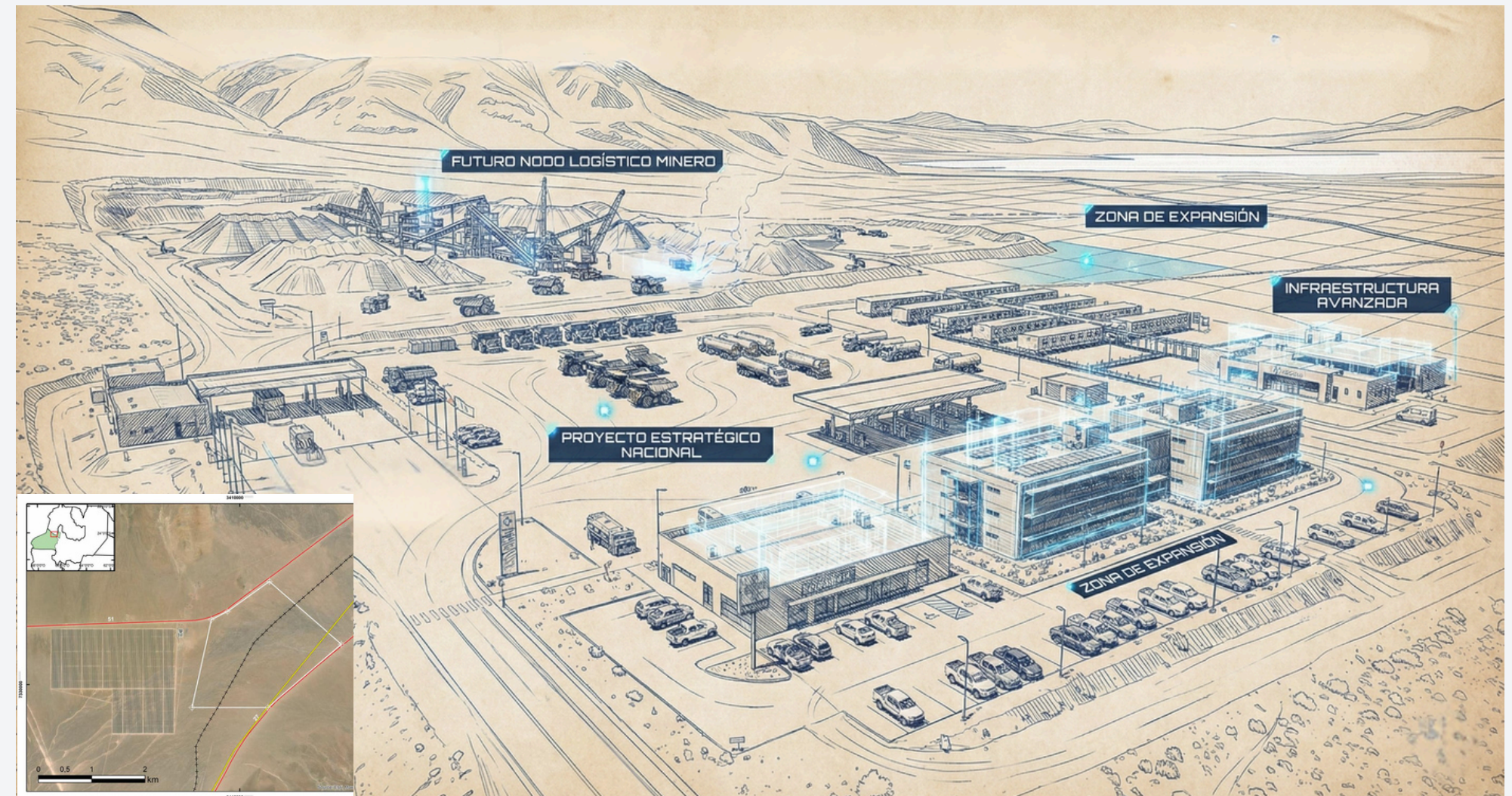
- **RN 51 Bypass** (Campo Quijano): A rapid alternative route connecting National Route 51 (RN 51) with Provincial Route 36 (RP 36) to streamline **heavy mining transport**.
- Paving of RP 27: **Optimizes mining transport logistics** at the site of the planned Mining Logistics Node (MLN), located within the Bioceanic Corridor.



MINING LOGISTICS HUB PROJECT

Spearheaded by REMSA S.A. & the Government of Salta

- **Objective:** To transform mining and industrial logistics in the Puna region.
- **Strategic Location:** An operational hub at the intersection of RN 51 and RP 27.
- **Core Functions:** Cargo consolidation and supply distribution.
- **Global Reach:** Connecting production to international markets via the Bioceanic Corridor.



CONCEPTUAL RENDERING OF THE MINING LOGISTICS HUB

THANK YOU.

WE INVITE YOU TO BE PART OF SALTA'S MINING FUTURE



remsa.gov.ar



Pitch deck